

SIEMENS

Ingenuity for life



SINAMICS V20 Smart Access

From wireless commissioning to maintenance—
everything at your fingertips.

usa.siemens.com/sinamics-v20

The SINAMICS V20 Smart Access is a web server module which mounts to your SINAMICS V20 quickly and easily.

In providing a Wi-fi based hot spot, the wireless connection transforms your mobile device or laptop into a virtual operator panel.

The simple embedded graphical user interface (GUI) makes it extremely easy-to-use the SINAMICS V20 drive in every phase of operation—from commissioning, operation, diagnostics and maintenance.

No separate app is necessary, nor is a written instruction manual needed—operation is very intuitive.

Highlights of SINAMICS V20 Smart Access

Provides easy and convenient access to the V20 even if it is located in difficult-to-access locations

User-friendly operation thanks to the embedded, intuitive web browser GUI and commissioning wizard

Full flexibility in working with both iOS and Android operating systems, along with commonly used HTML5 capable web browsers such as Chrome, Internet Explorer (IE) and Safari

Built-in multi-color LED provides quick and easy communication status

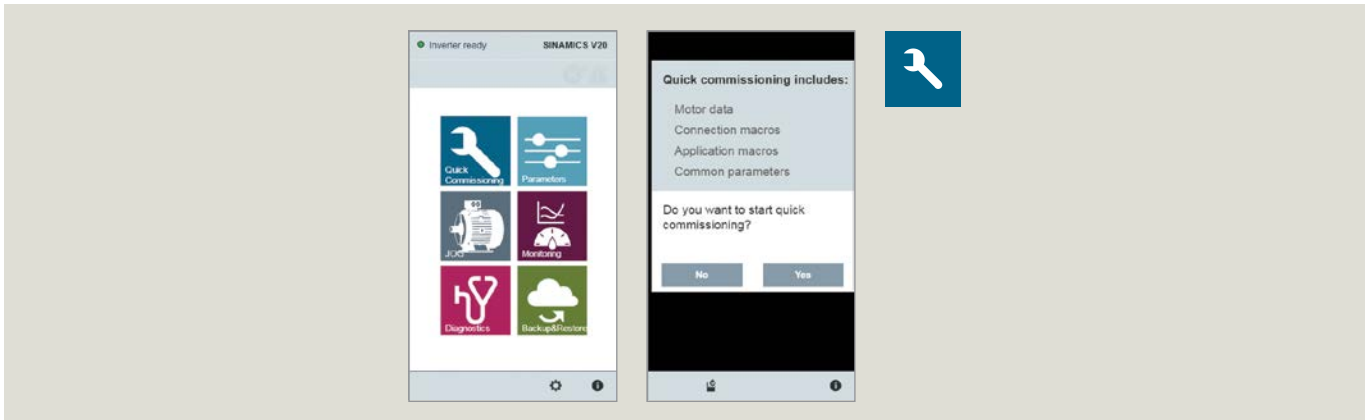
Many security features included to limit/restrict operator access and control functions

SINAMICS V20 Smart Access

Intuitive operation with simple menu-driven screens

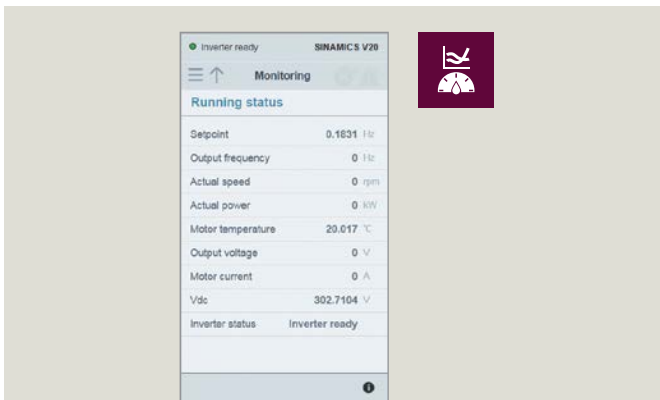
The SINAMICS V20 Smart Access web server module allows you to wirelessly connect your mobile device to your SINAMICS V20 drive—transforming it into a powerful tool for commissioning, diagnostics and operation with numerous functions.

It can be set-up in just a few steps and requires no installation or download of additional software. Your common web browser and operating system is enough to get started.



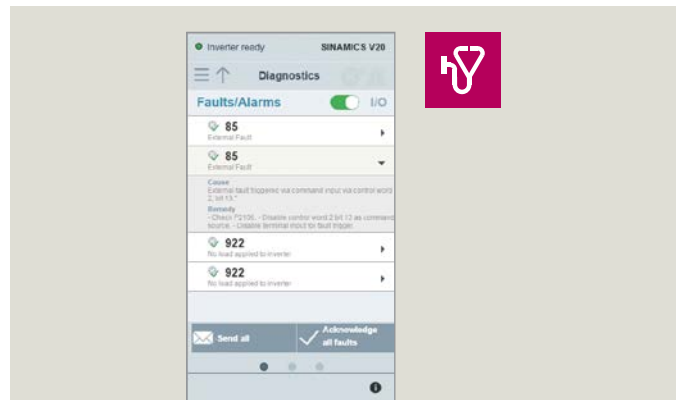
Quick set-up wizard for fast and easy commissioning

- Motor data can be entered and checked
- Connection macros for the digital inputs and digital outputs can be activated
- Application macros can be chosen and activated for pumps, fans, conveyors, etc.
- Common and frequently used parameters can be set (e.g. motor start, acceleration, deceleration, max./min. speed, etc.)



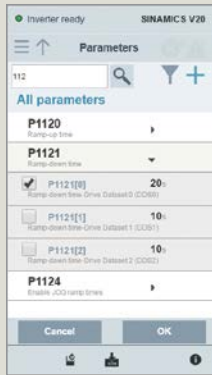
Monitor your drive's status

- Most significant drive data status can be viewed in real-time quickly and easily—e.g. speed, current, voltage, power, temperature, etc.



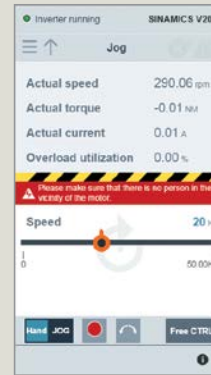
Drive servicing is easy

- An overview of alarms, faults and status is provided
- Fault codes can be directly transferred (via email) to your local service provider
- Status of all digital and analog inputs and outputs can be checked at a glance



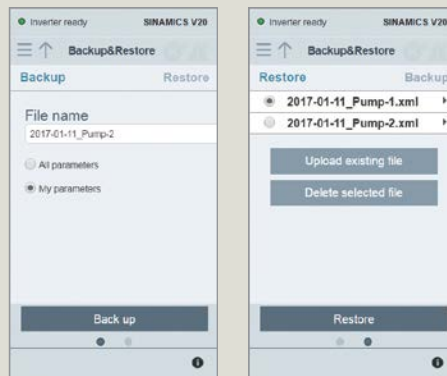
Parameters can be quickly found and modified

- Quick search and filtering by functional parameter groups
- Frequently used parameters can be saved and easily changed in "my parameters"
- Parameters can quickly be set to default settings (user and factory defaults)
- Parameters can be saved to the drive or the Smart Access module



Motor operation and control can be tested

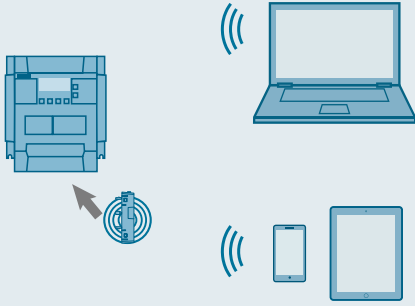
- Motor speed and direction can be changed
- Motor can be set to JOG mode or continuous operation with ON/OFF control
- Drive settings can be tested



Data can be easily backed up, restored and shared—Firmware updates are quickly downloaded

- Drive settings can be backed up in parameter files
- Drive data can be shared and sent to other devices for multiple use
- Parameter files can be read and changed offline with an external editor for optimization or quick support by your local service provider
- Drive settings can be restored out of the Smart Access module or received via web server or email transfer on your mobile device
- Any firmware updates are easily downloadable via the web server

Technical information	
Part number	6SL3255-0VA00-5AA0 DC
Rated voltage	24V DC
Wireless technology and working frequency	Wi-Fi 2400–2483.5 MHz
Compatibility modulation type	802.11 b/g
Antenna type and gain	1.9 dBI
Extreme temperature range	-10°–60° C (14°–140° F)

	Device with wireless network adapter	Operating system	Recommended web browser
	PC	Windows 7	<ul style="list-style-type: none"> ■ ≥ Google Chrome 54.0 ■ ≥ IE 11.0.9600
	Smart phone / tablet	≥ Apple iOS 9.3	<ul style="list-style-type: none"> ■ ≥ Google Chrome 54.0 ■ Safari
≥ Android 4.4.4		<ul style="list-style-type: none"> ■ ≥ Google Chrome 54.0 	

Published by
Siemens Industry, Inc.

5300 Triangle Parkway
Norcross, GA 30092

(770) 871-3800

usa.siemens.com/motioncontrol

Order No. DRBR-V20SA-0117

Printed in USA

© 2017 Siemens Industry, Inc.

This document contains only general descriptions or performance features, which do not always apply in the manner described in concrete application situations or may change as the products undergo further development. Performance features are valid only if they are formally agreed upon when the contract is closed. Siemens is a registered trademark of Siemens AG. Product names mentioned may be trademarks or registered trademarks of their respective companies. Specifications are subject to change without notice.